



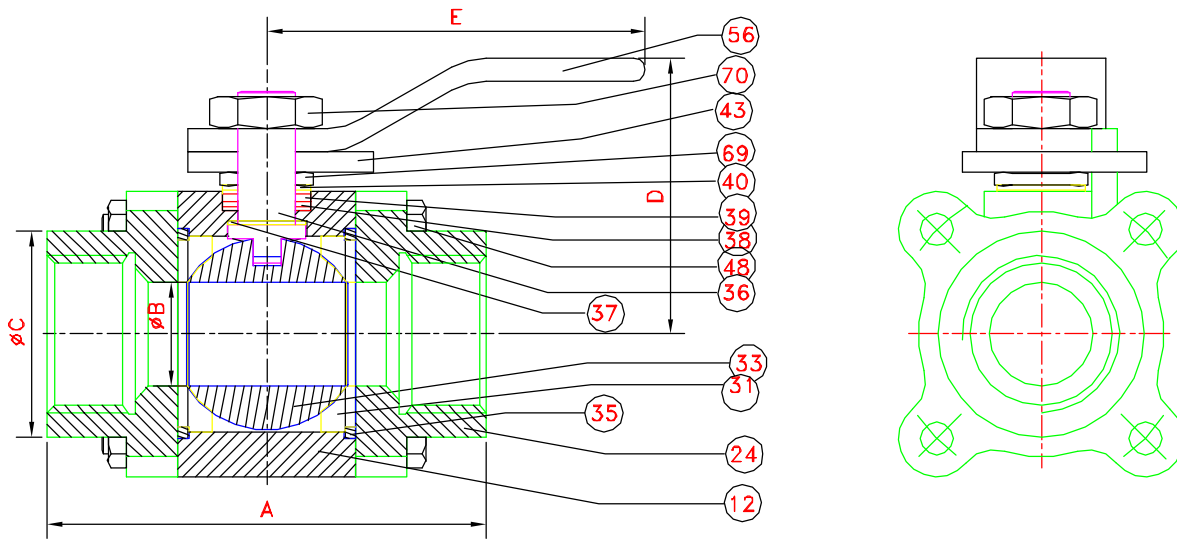
INFLOW

BALL VALVES

PRODUCT DESCRIPTION : Floating Type Screwed End / Socket Weld End Ball Valve

SERIES : FJ31

MANUFACTURING STANDARDS: BS EN 17292/ASMI B16.34 API 6D Testing : BS-6755/API 6D



Part No	Part Name	Material Code							SPECIFICATION OF MATERIAL						
		A	B	C	D	I	J	O							
12	Body	A	B	C	D	I	J	O	A=CS(BS)ASTM A216 Gr WCB	O=ASTM A 352 Gr LCB					
24	Pipe End	A	B	C	D	I	J	O	B=ASTM A 351 Gr CF8	P=ASTM A 217 Gr CA15					
33	Ball	E	B	C	D	I	J	F	C=ASTM A 351 Gr CF8M	E=AISI - 304					
36	Stem	J	E	F	D	I			D=ASTM A 351 Gr CN7M	F=ASISI - 316					
39	Gland	J	E	F	D	I			I=ASTM A 494 N 12MV	GFT= GLASS FILLED TEFLON					
31	Seat	PTFE	GFT	POM					J=ASTM A 494 CW 12MW						
38	Stem Seal	PTFE	GRAFOIL	GFT					Dimension Details				CLASS		
40	Spring Disc	SPRING STEEL			NOMINAL	15	20	25	32	40	50				
37	Disc Bearing	GFT			SIZE	RP	FB	RP	FB	RP	FB	RP	FB	RP	800
69	Gland Nut	STEEL			A	65	65	71	94	106	115				
43	Stopper Plate	STEEL			B	9.5	12.5	19	25	32	38				
44	Lever	STEEL			C	30.5	33	42	50	55	70				
48	BODY BOLT, NUT	STEEL	H.T. Gr. 8.8		D	46	56	70	76	87	92				
35	Body Seal	PTFE	SWG		E	112	112	146	146	178	178				
70	Lever Nut	STEEL	H.T. Gr. 8.8												

TESTING DETAILS

CLASS	HYDROSTATIC		PNEUMATIC SEAT
	SHELL	SEAT	
800	100 Kg/cm ²	70 Kg/cm ²	
600	70 Kg/cm ²	50 Kg/cm ²	

ALL DIMENSIONS ARE IN mm

1. DUE TO CONTINUOUS DEVELOPMENT PROGRAM DIMENSIONS ARE SUBJECTED TO CHANGES WITHOUT ANY FURTHER NOTICE
2. OTHER MATERIALS UPON REQUEST.

CUSTOMER : _____

ENQUIRY/ORDER NO: _____

JOB PROJECTS : _____

OUR REF NO : _____

CERTIFICATION SEAL

MANUFACTURERS : **FLOW CONTROL ENGINEERS**

D-66, GOVT. INDUSTRIAL ESTATE
BELGAUM - 590 008.